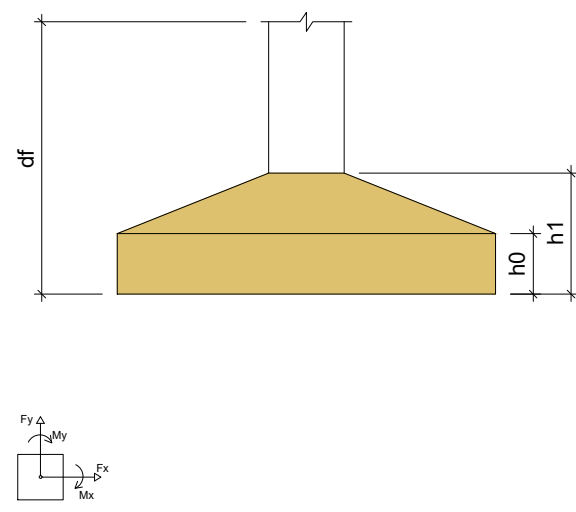
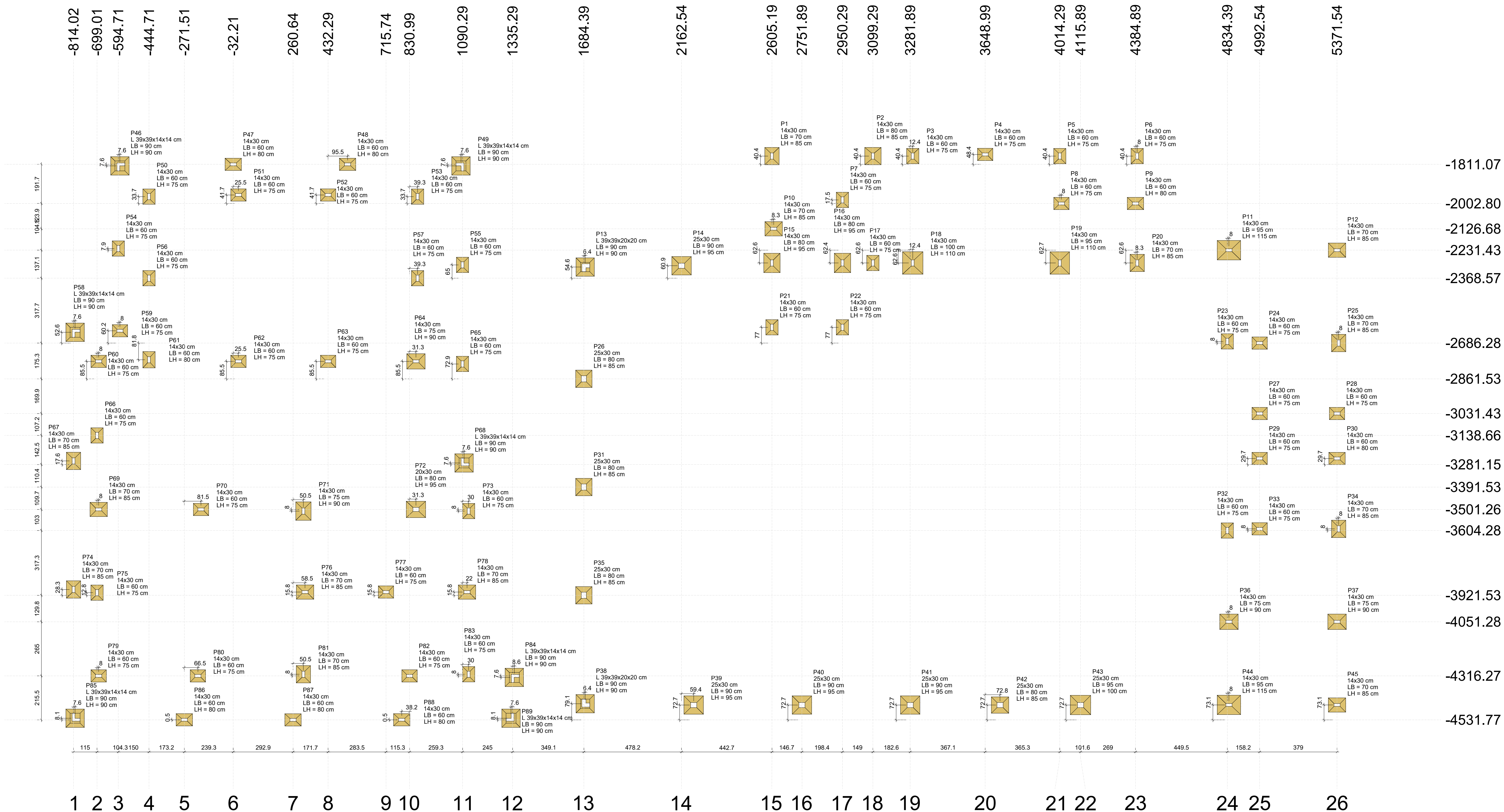


A
B
C
D
E
F
G
H
I
J
K
L
M
N
O
P
Q



Planta de locação
escala 1:100

Nome	Seção	X (cm)	Y (cm)	Carga Máx. (tf)	Carga Mín. (tf)	Pilar		My Máximo (kgf.m)		Fundação		Lado B (cm)	Lado H (cm)	R1 / hb (cm)	df (cm)	Localização no eixo X		Nome			
						Mx Máximo (kgf.m)	Positivo	Positivo	Negativo	Fx Máximo (tf)	Fy Máximo (tf)					Lado B Positivo	Lado H Positivo		Lado B Negativo	Lado H Negativo	Coordenadas
P1	14x30	2605.19	-1770.65	5.9	7.4	0	0	0	0	0	0	0	85	25	40	120	-814.02	P58			
P2	14x30	3099.29	-1770.65	7.5	7.4	0	0	0	0.5	0.0	0.6	0	80	85	35	50	120	-814.02	P67, P74, P85		
P3	14x30	3294.29	-1770.65	4.5	4.4	0	0	0	0	0	0.7	0	60	70	30	40	120	-680.01	P60, P75		
P4	14x30	3648.99	-1762.65	4.0	3.8	0	0	0	0	0.2	0.0	0.1	0	60	75	30	40	120	-691.01	P60, P65, P79	
P5	14x30	4014.29	-1770.65	5.1	5.0	0	0	0	0	0.1	0.0	0.1	0	60	75	30	40	120	-684.01	P64, P54	
P6	14x30	4362.89	-1770.65	3.2	3.1	0	0	0	0	0.3	0.2	0.3	0	60	75	30	40	120	-598.71	P59	
P7	14x30	2950.29	-1985.30	3.0	2.9	0	0	0	0	0.1	0.0	0.5	0	60	75	30	40	120	-447.51	P50, P56, P61	
P8	14x30	4022.29	-2002.80	4.6	4.5	0	0	0	0	0.0	-0.2	0.1	0	60	75	30	40	120	-221.15	P86	
P9	14x30	4384.89	-2002.80	5.3	5.2	0	0	0	0	0.3	0.2	0.3	0	60	75	30	40	120	-205.01	P80	
P10	14x30	2613.49	-2126.68	6.9	6.8	0	0	0	0	0.0	-0.5	0.0	-0.2	70	85	25	40	120	-190.01	P70	
P11	14x30	4842.39	-2231.43	11.5	11.4	0	0	0	0	0.1	0.0	0.5	0.0	95	115	20	40	120	-32.21	P71	
P12	14x30	5371.54	-2231.43	6.5	6.5	0	0	0	0	0.4	0.3	0.5	0.4	70	25	40	120	-4.71	P11, P62		
P13	L 39x39x20x20	1684.39	-2307.63	7.7	7.3	0	0	0	0	0.0	-0.5	0.0	0.0	90	90	30	40	120	260.64	P87	
P14	25x30	2162.54	-2307.63	8.7	8.5	0	0	0	0	0.0	0.1	0.0	0.0	95	95	30	40	120	311.18	P71, P81	
P15	14x30	2605.19	-2263.86	8.7	8.6	0	0	0	0	0.2	0.0	0.3	0.0	80	95	25	40	120	1319.76	P76	
P16	14x30	2950.29	-2263.86	8.7	8.6	0	0	0	0	0.2	0.0	0.0	-0.2	80	95	25	40	120	432.42	P52, P63	
P17	14x30	3099.29	-2263.86	2.3	2.2	0	0	0	0	0.2	0.0	0.0	0.0	100	110	20	40	120	577.79	P48	
P18	14x30	3294.29	-2263.86	13.1	12.9	0	0	0	0	0.0	-0.5	0.0	-0.6	100	110	20	40	120	715.47	P77	
P19	14x30	4014.29	-2264.13	11.9	11.7	0	0	0	0	0.6	0.0	0.0	-0.1	95	110	40	60	120	792.79	P88	
P20	14x30	4362.89	-2263.86	6.1	6.0	0	0	0	0	0.1	0.0	0.0	0.0	100	110	40	60	120	530.99	P82	
P21	14x30	2605.19	-2609.28	3.7	3.6	0	0	0	0	0.0	-0.2	0.0	-0.4	60	75	30	40	120	862.29	P64, P72	
P22	14x30	2950.29	-2609.28	3.6	3.5	0	0	0	0	0.3	0.0	0.0	-0.2	60	75	30	40	120	870.0	P33, P57	
P23	14x30	4842.39	-2678.28	3.0	2.9	0	0	0	0	0.0	0.0	0.0	0.0	60	75	30	40	120	1090.29	P40, P65, P68	
P24	14x30	4992.54	-2686.28	5.1	5.0	0	0	0	0	0.0	-0.2	0.3	0.0	60	75	30	40	120	1112.79	P78	
P25	14x30	5371.54	-2686.28	6.5	6.4	0	0	0	0	0.3	0.0	0.0	-0.4	70	85	25	40	120	1112.79	P78, P83	
P26	14x30	1684.39	-2851.53	6.5	6.3	0	0	0	0	0.0	0.0	0.0	0.0	90	95	30	40	120	1335.29	P84	
P27	14x30	4992.54	-3031.43	4.6	4.4	0	0	0	0	0.0	-0.6	0.0	-0.2	60	75	30	40	120	1336.29	P84	
P28	14x30	5371.54	-3031.43	5.1	5.0	0	0	0	0	0.5	0.0	0.0	-0.2	60	75	30	40	120	1684.39	P84	
P29	14x30	4992.54	-3251.43	4.6	4.5	0	0	0	0	0.0	0.0	0.0	0.0	60	75	30	40	120	2102.14	P14	
P30	14x30	5371.54	-3251.43	5.2	5.1	0	0	0	0	0.5	0.0	0.1	0.0	60	80	30	40	120	2221.89	P39	
P31	25x30	1684.39	-3391.53	7.7	7.4	0	0	0	0	0.7	0.0	0.0	-0.5	85	25	40	120	2605.19	P11, P21, P21		
P32	14x30	4992.54	-3604.28	2.9	2.7	0	0	0	0	0.0	0.0	0.0	0.0	60	75	30	40	120	2613.49	P10	
P33	14x30	4992.54	-3596.28	5.1	5.0	0	0	0	0	0.0	-0.2	0.0	-0.2	60	75	30	40	120	2751.89	P40	
P34	14x30	5371.54	-3596.28	6.2	6.2	0	0	0	0	0.3	0.2	0.3	0.0	70	85	25	40	120	2950.29	P76, P76	
P35	25x30	1684.39	-3801.53	6.3	6.1	0	0	0	0	0.0	0.0	0.3	0.0	80	85	25	40	120	3099.29	P22, P27	
P36	14x30	4842.39	-4051.28	7.1	7.0	0	0	0	0	0.0	-0.7	0.0	0.0	75	90	25	40	120	3281.89	P41	
P37	14x30	5371.54	-4051.28	7.5	7.4	0	0	0	0	0.0	0.0	0.0	0.0	75	90	25	40	120	3294.29	P38, P18	
P38	L 39x39x20x20	1684.39	-4459.03	8.7	8.3	0	0	0	0	0.0	-0.3	0.0	-0.9	90	90	30	40	120	3648.99	P41	
P39	25x30	2221.89	-4459.03	9.7	9.5	0	0	0	0	0.0	-0.2	0.0	0.0	90	95	35	50	120	3721.76	P42	
P40	25x30	2751.89	-4459.03	9.5	9.5	0	0	0	0	0.0	0.0	0.0	0.0	90	95	35	50	120	4014.29	P5, P19	
P41	25x30	3281.89	-4459.03	8.9	8.7	0	0	0	0	0.2	0.0	0.0	0.0	90	95	35	50	120	4022.29	P8	
P42	25x30	3721.76	-4459.03	7.0	6.8	0	0	0	0	0.1	0.0	0.1	0.0	80	85	35	50	120	4115.89	P43	
P43	25x30	4115.89	-4459.03	10.3	10.0	0	0	0	0	0.0	0.0	0.0	0.0	90	95	35	50	120	4384.89	P19	
P44	14x30	4842.39	-4458.63	12.9	12.8	0	0	0	0	0.6	0.0	0.0	-0.3	95	115	20	40	120	4392.69	P6	
P45	14x30	5371.54	-4458.63	6.0	5.9	0	0	0	0	0.6	0.0	0.0	-0.4	70	85	25	40	120	4413.89	P20	
P46	L 39x39x14x14	5347.11	-1811.07	5.1	4.8	0	0	0	0	0.0	-0.3	0.0	0.0	60	70	30	40	120	4584.39	P23, P32	
P47	14x30	3221.89	-1811.07	5.5	5.3	0	0	0	0	0.0	0.0	0.1	0.0	60	80	30	40	120	4842.39	P1, P3, P44	
P48	14x30	3221.89	-1811.07	5.4	5.3	0	0	0	0	0.1	0.0	0.0	0.0	60	80	30	40	120	4962.39	P1, P3, P44	
P49	L 39x39x14x14	1090.29	-1811.07	5.4	5.3	0	0	0	0	0.0	0.0	0.5	0.8	5.8	5.8	5.8	5.8	120	5271.54	P21, P27, P29, P33	
P50	14x30	444.71	-1989.07	4.0	3.9	0	0	0	0	0.0	-0.3	0.3	0.0	60	75	30	40	120	4492.39	P11, P26, P30, P37, P45	
P51	14x30	471.1	-1981.07	4.6	4.5	0	0	0	0	0.1	0.0	0.1	0.0	60	75	30	40	120	5399.01	P25, P34	
P52	14x30	432.29	-1981.07	4.6	4.5	0	0	0	0	0.0	-0.2	0.1	0.0	60	75	30	40	120			
P53	14x30	870.29	-1989.07	4.1	4.0	0	0	0	0	0.4	0.0	0.4	0.0	60	75	30	40	120			
P54	14x30	594.71	-2223.67	4.3	4.2	0	0	0	0	0.1	0.0	0.0	0.0	60	75	30	40	120			
P55	14x30	1090.29	-2303.57	4.8	4.7	0	0	0	0	0.0	0.0	0.1	0.0	60	75	30	40	120			
P56	14x30	444.71	-2388.57	4.2	4.0	0	0	0	0	0.0	0.0	0.0	0.0	60	75	30	40	120			
P57	14x30	870.29	-2388.57	3.7	3.6	0	0	0	0	0.0	0.0	0.0	0.0	60	75	30	40	120			
P58	L 39x39x14x14	-514.02	-2626.04	4.8	4.6	0	0	0	0	0.0	-0.1	0.9	0.0	90	90	30	40	120			
P59	14x30	-586.71	-2626.07	3.0	2.9	0	0	0	0	0.2	0.0	0.0	-0.4	60	75	30	40	120			
P60	14x30	-691.01	-2776.07	2.9	2.7	0	0	0	0	0.3	0.0	0.0	0.0	70	80	30	40	120			
P61	14x30	-444.71	-2768.07	5.4	5.3	0	0	0	0	0.0	-0.3	0.0	-0.4	60	70	30	40	120			
P62	14x30	-871.1	-2776.07	4.5	4.4	0	0	0	0	0.1	0.0	0.0	0.0	60	75	30	40	120			
P63	14x30	432.29	-2776.07	4.4	4.3	0	0	0	0	0.1	0.0	0.1	0.0	60	75	30	40	120			
P64	14x30	862.29	-2776.07	7.9	7.8	0	0	0	0	0.3	0.0	0.7	0.0	75	90	25	40	120			
P65	14x30	1090.29	-2786.66	8.8	8.6	0	0	0	0	0.0	0.0	0.0	0.0	60	75	30	40	120			
P66	14x30	-699.01	-3138.66	3.9	3.8	0	0	0	0	0.0	0.0	0.0	0.0	60	75	30	40	120			
P67	14x30	-814.01	-3263.57	6.1	6.0	0	0	0	0	0.0	0.0	0.1	0.0	70	85	25	40	120			
P68	L 39x39x14x14	1090.29	-3261.58	6.1	5.9	0	0	0	0	0.0	-0.8	0.0	-0.6	90	90	30	40	120			
P69	14x30	-691.01	-3501.28	6.1	6.0	0	0	0	0	0.0	0.0	0.0	0.0	60	75	30	40	120			
P70	14x30	-190.01	-3501.28	5.0	4.9	0	0	0	0	0.1	0.0	0.0	0.0	60	75	30	40	120			
P71	14x30	311.18	-3509.28	7.5	6.9	0	0	0	0	0.0	0.0	0.3									

Os esforços indicados nesta tabela são os valores máximos obtidos para as combinações definidas para as fundações. Para análises complementares, deve-se consultar o relatório de esforços na fundação, que apresenta os valores calculados para cada combinação.

Coordenadas (cm)	Localização no eixo X	Nome
-814.02	P58	
-814.01	P67, P74, P85	
-499.01	P66, P75	
-491.01	P60, P69, P79	
-594.71	P46, P54	
-1985.30	P7	
-2002.80	P8, P9	
-2223.57	P54	
-205.01	P80	
-190.01	P70	
-32.21	P47	
-2293.98	P15, P17, P18, P20	
-2294.13	P19	
-2303.57	P55	
-2307.63	P13, P14	
-2368.57	P52, P63	
-2609.28	P21, P22	
-2626.04	P58	
-2626.07	P59	
-2678.28	P62	
-2686.28	P64, P72	
-2768.07	P61	
-2776.07	P60, P62, P63, P64	
-1120.29	P73, P83	
-135.29	P89	
-1356.24	P91	
-1356.24	P13, P16, P31, P35, P38	
-2162.54	P14	
-2221.59	P39	
-2221.59	P15, P51, P52, P51	
-2613.10	P10	
-2751.90	P40	
-2909.22	P16, P22	
-3082.92	P2, P17	
-3081.89	P41	
-3294.29	P18	
-3648.94	P4	
-3721.24	P42	
-4014.29	P19, P19	
-4115.98	P43	
-4384.69	P45	
-4622.29	P8	
-4932.69	P6	
-4938.10	P20	
-4854.32	P12	
-4842.31	P13, P36, P44	
-4932.64	P27, P29, P33	
-4932.64	P27, P29, P33, P37, P45	
-619.54	P25, P34	